

**Note: the following pages are from brochures only pertaining to the appropriate vehicle. This is not a complete brochure.**

# BUICK

1980 EXTERIOR COLORS



## BUICK 1980 EXTERIOR COLORS.

Available on all models



White • Code 11



Silver\* • Code 15



Medium Yellow • Code 50



Tan\* • Code 63



Cinnabar • Code 77

Available on all models except Century Sport Coupe & Sport Wagon Option



Black • Code 19



Medium Blue\* • Code 21



Dark Blue\* • Code 29



Dark Green\* • Code 44



Beige • Code 59



Medium Brown\* • Code 69



Dark Red\* • Code 76



Light Gray • Code 85

Available on all models except Skyhawk, Skylark, Century Sport Coupe, & Sport Wagon Option



Red\* • Code 75

Available on Skyhawk and Skylark only



Bright Red • Code 72

Regal Somerset Special Colors



Dark Blue\* • Code 29 and  
Somerset Tan • Code 38

Special Electra & Riviera colors (extra cost)



Brown Firemist\* • Code 97



Gray Firemist\* • Code 98



Dark Brown Firemist\* • Code 99

Additional Designers' Accent Colors



Gray Accent Color\*



Blue Accent Color\*

Ask your Buick salesperson  
about selected standard car colors  
that are also used as Accent Colors.

\*Metallic paint



## BUICK VINYL TOPS

Available at extra cost on all models except Skyhawk, Station Wagons and Century Sport Coupe. Riviera S TYPE and Skylark Sport model vinyl tops available only when matching lower car color is ordered.



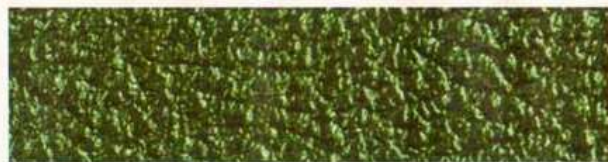
White • Code 11



Black • Code 19



Blue • Code 21



Green • Code 44

Buick Motor Division, General Motors Corporation, reserves the right to make changes at any time, without notice, in prices, colors, materials, equipment, specifications and models, and also to discontinue models.



Tan • Code 63



Red • Code 76



Gray • Code 85



Brown • Code 69 (available on Electra only)



Dark Blue • Code 29 (available on Electra only)

One of life's pleasures is getting something you really want, with something you really need. Like Buick Wagons.

Let's begin with Century, our combination of mid-size practicality and luxury. Clean, crisp, exterior appearance set off by a new grille. Some Century Wagon buyers (and you might be one of them) want the look and feel of more sporting machinery. That would be our Sport Wagon. It's taut visual display, made even more delicious in the driving.

As for the Century Wagon on the left, you can see that it's a touch more fancy. That's the Century Estate Wagon, and with it, we reestablish the tradition of Estate Wagons.

No matter which Century Wagon suits your fancy, you'll find a lot to like in the way of comfort and utility. With 71.8 cubic feet of load space with the second seat folded down. Or comfortable seating for six. A 3.0 liter V-6, automatic transmission and power-assisted brakes. All standard. All on a firm, 108.1" wheelbase.

Inside, this new Century Wagon can be ordered with all vinyl front and rear seats. Or, if you prefer, you can order a cloth front, vinyl rear seat combination. And that's standard.

In the popular mid-size wagon category, there probably aren't any wagons with more style, practicality, and luxury than our Century models. Their crisp styling underlines their utility; their plush interiors belie their Buick heritage.

Yes, the Century Wagons are one of life's pleasures.

Century Wagons interior  
 Size availability

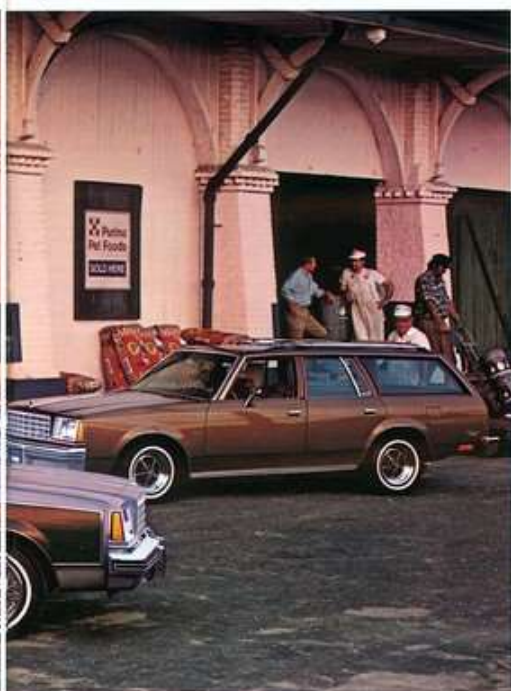
Check to order: Leather seats (L)				
Check to order: Cloth to vinyl* Leather to vinyl**				
Check to order: Leather to vinyl** Leather to vinyl**				
Check to order: Leather to vinyl** Leather to vinyl**				
Check to order: Leather to vinyl** Leather to vinyl**				

Century Wagon	S	A	A
Century Estate Wagon	S	A	A
Century Sport Wagon (Optional 200)	S	A	A
S - standard A - available * - cloth from vinyl seat available			

Century Wagons

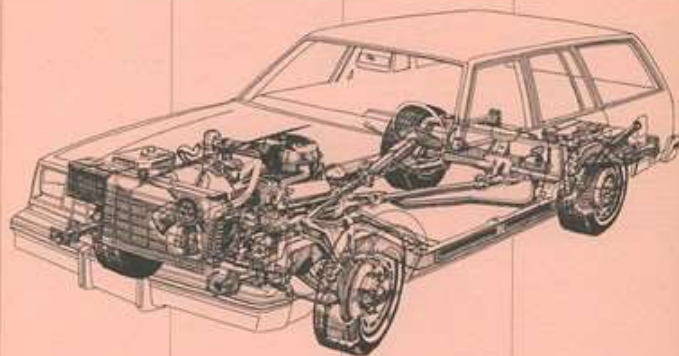


Century Estate Wagon (foreground), Century Station Wagon, background.



Century Station Wagon (background).





**STANDARD EQUIPMENT**

**Engine**

- High Energy ignition
- Delco Freedom battery
- Semi-boost cooling system

**Chassis**

- Automatic transmission
- Manual steering
- Power brakes
- Fiberglass behind, radial ply P195/75R-14 tires
- Compact spare tire (Stowaway with limited-slip differential)
- Coil spring suspension

**Comfort and Convenience**

- Choice of all vinyl or cloth front, vinyl-rear bench seat (Century)
- Choice of all cloth, vinyl or cloth front/vinyl rear rearback seat (Estate Wagon)
- Load floor carpet (Estate Wagon)
- Wide view, inside day/night mirror
- Woodblock wiper system with single wiper feature for steady windshield
- Cigarette lighter

- Combination turn signal and high/low beam control
- Lighted front-door-operated dome (Century), front and rear-door-operated dome, courtesy glove compartment, interior sunshade bag, rear courtesy seat, "Headlights on" indicator (Estate Wagon)
- L80-100-psi direct inflator
- Rear storage compartments

**Appearance and Protection**

- Bumper protective stripes—front and rear
- Inside hood lock release
- Rear bumper guard
- Custom rubber panel moldings (Estate Wagon)
- Roof drip scalp moldings
- Bright woodblock wheel moldings (Century, Century Option)
- Black woodblock wheel moldings (Sport Wagon Option)
- Front and rear wheel opening moldings (Estate Wagon, Sport Wagon Option)

**AVAILABLE EQUIPMENT**

**Engine**

- Heavy-duty battery
- Heavy-duty engine and transmission cooling
- Engine block heater
- California assembly line emissions equipment, C-4 System and testing (required in California)
- 70-amp Delcotron generator

**Chassis**

- Power steering
- Limited-slip differential with stowaway spare tire
- Automatic level control
- Fiberglass behind, radial ply whitewall P195/75R-14 tires
- Steel behind, radial ply black wall or whitewall P195/75R-14 tires
- Steel behind, radial ply, wide-mid, white hillside lettered P205/70R-14 tires
- Multiple-axle handling package (includes rear stabilizer bar, specific springs and shock absorbers)
- Firm ride and handling package (recommended for load towing)

**Interior**

- 6 way power seat
- Carpet covers and hand mats
- Carpet covers and hand mats with carpet inserts
- Lighted view vanity mirror (passenger)
- Daylighted view vanity mirror (rear)

**Comfort and Convenience**

- Air conditioner
- Automatic air conditioner
- Cruise Master speed control
- Tilt steering column
- Electric dial clock
- Quartz-crystal-controlled digital clock
- Redlining passenger warning—manual
- Instrument gauge
- Electric door locks
- Power windows
- Soft Ray tinted glass
- 3 speed windshield wiper with low-speed delay feature
- Electric rear window defogger
- Dome reading light
- Power vanity mirror
- Lighted view vanity mirror
- Engine compartment light

**AVAILABLE MODELS**

Century Estate Wagon	\$20
Century Sport Wagon	\$20
Century Sport Wagon	\$20 (option on Model E30)

**SPECIAL PACKAGE**

**Century Sport Wagon Package** (available on Century Wagon) includes black painted special handling and grille trim, wiper shield wipers, window reveal moldings, center pillar, side mirror, door trim, wheel opening moldings, air deflector, sport mirrors, black door, rubber ride and handling suspension, steel behind, radial ply P205/70R-14 tires and Designers' Sport wheels (4).

**POWERTEAMS**

Standard engine	2.4 liter (101 CID) 2.400, V-4
Available engines	4.1 liter (199 CID) 2.400, V-6 4.8 liter (283 CID) 2.400, V-6 6.0 liter (360 CID) 2.400, V-6

Not available in California. These heavy engines are equipped with GM built engines produced by various divisions who were dealer or direct.

**DIMENSIONS**

Wheelbase	2,743 (108.3)
Front overhang	1,096 (42.8)
Rear overhang	1,407 (55.4)
Length	4,875 (191.6)
Width	6,834 (273.3)
Height	5,419 (213.7)
Front interior	
Head room	985 (38.8)
Leg room	1,089 (42.8)
Shoulder room	1,444 (56.8)
Hip room	1,205 (47.2)
Rear interior	
Head room	985 (38.8)
Leg room	913 (35.9)
Shoulder room	1,406 (55.3)
Hip room	1,412 (55.6)
Trunk space to floor (cu. ft.)	8.03 (27.8)

**ORDERING GUIDE**

**Model selected:**

**Engine choice:**

**Be sure to consider:**

- Power steering
- Automatic air conditioner
- Steel behind, radial ply P195/75R-14 tires
- Custom steering wheel
- Sport steering wheel
- Protective body-side moldings
- Rubber panel molding (Century)
- Belt moldings (Sport Wagon Option)
- Custom wheel covers
- Custom wire wheel covers with locks
- Chrome plated road wheels (4)
- Designers' Sport wheels (4)
- Designers' wheel covers
- Steel aluminum wheels (4)
- Load floor area carpet (Century)
- Front bumper guards

**Additional selections:**

- Rear window air deflector
- Protective body-side moldings
- Steel aluminum wheels (4)
- Load floor area carpet (Century)
- Headlights with tungsten-halogen light beams

- Commemorative group "Third step-in" indicator, glow compartment, interior, exterior, sunshade tag light, rear door jamb switch (Century)
- Remote control, outside, rear view mirror
- Outside, rearview sport mirrors (left hand, inside, right-hand mounted)
- Litter jacket
- Electric tailgate lock release
- Lockable storage compartments
- Adjustable roof rack
- Rear window air deflector
- Delco AM radio
- Delco AM-FM radio
- Delco AM-FM stereo cassette
- Delco 8-track tape player with AM-FM stereo radio
- Delco cassette tape player
- Delco AM-FM stereo radio
- Delco CB and AM-FM stereo radio with Triflow power antenna
- Near speakers
- Automatic power antenna
- Automatic Triflow power antenna
- Headlights with tungsten-halogen light beams
- Appearance and Protection
  - Designers' Accent paint (N.A. with wood grain applique or Sport Wagon Option)
  - Color-matched custom front and rear seat belts and front shoulder belts
  - Rubber panel molding (Century)
  - Belt moldings (Sport Wagon Option)
  - Custom wire covers with locks
  - Custom wire wheel covers with Triflow power antenna
  - Chrome plated road wheels (4)
  - Designers' Sport wheels (4)
  - Steel aluminum wheels (4)
  - Load floor area carpet (Century)
  - Front bumper guards

**A NEW 4.3 LITER V-6.**

A new 4.3 liter (260 CID) 2-valve V-6 will be offered as an available engine in all Century models, Regal and Regal Limited.

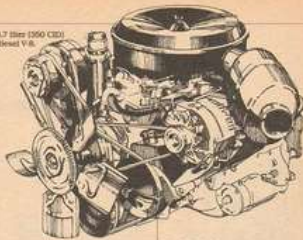
**THE NEW 4.1 LITER V-6.**

1980. Another new V-6 engine to suit the times. It's a 4.1 liter (252 CID) 4-barrel powerplant, which will be installed in Electra Coupes and Sedans, (except in California), and will be available in LeSabre Coupes and Sedans (except in California). Let's examine one of the

(except in California). This compact, lightweight V-8 offers a logical step up in engine size, serving as an intermediate powerplant between the standard 3.8 liter V-6 and the available 4.9 liter V-8.

reasons for installing this engine in these models. To begin with, there have been important weight reductions in both LeSabre and Electra. By its compact design, even the engine contributes to weight reduction. So, with less weight to move, it is possible to enjoy the new 4.1 liter V-6 that gives LeSabre and Electra models a very satisfying feeling.

3.7 liter (230 CID) diesel V-6



**AND NOW, A DIESEL V-8.**

A diesel may or may not be right for you. Only you can be the judge of that. If you're thinking about buying a Buick equipped with a diesel engine, here are some pertinent facts. Since the diesel engine offered by Buick is a 90° V-8 design, it is inherently dynamically balanced for smoothness. Its cast-iron block has reinforced structures for strength and durability. Its high compression ratio—22:1—means ignition occurs spontaneously. The diesel V-8 offered in LeSabre Estate Wagon and all Electra models is a 5.7 liter (350 CID) unit, with these diesel design features:

**Fuel injection system:**

A precision pump injects precise amounts of fuel under high pressure into each cylinder in proper firing sequence.

**Combustion pre-chambers:**

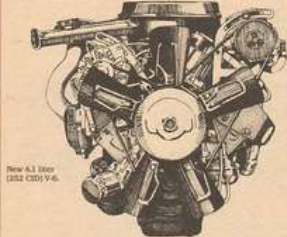
Each cylinder has a pre-chamber where combustion begins when the fuel is injected.

**Glow plugs:**

Each cylinder has a glow plug, located in the combustion pre-chamber. It's a miniature heating element that is activated when the ignition key is turned on. A sensing device turns them off automatically.

**Dual batteries:**

Two Delco "Freedom" batteries furnish current for the glow plugs and for cranking the engine.



New 4.1 liter (252 CID) V-6

**TURBOCHARGING.**

We're into our third year of offering turbocharged engines, which means we've amassed quite a bit of experience. This may be the first time you've ever thought about buying one, and you probably have some pretty honest questions about turbocharged engines.

First, we offer three turbocharged 3.8 liter (231 CID) V-6 engines. Their internal parts differ slightly from their normally aspirated brethren, because turbocharging can produce more horsepower from the same size engine. So, rest assured that the engine is designed to handle the turbocharging.

Second, we make the turbocharged engine standard on the LeSabre Sport Coupe, the Regal Sport Coupe, and the Riviera 5 TYP. Plus, you can order our available turbocharged V-6 in any Century Coupe or Sedan. That makes these exciting powerplants offered on a broad range of Buick models.

How does it work? Well, an automobile engine does work by

producing heat. Converting that heat to usable power is the trick. The more heat converted to power, the higher the engine's efficiency. Conventional engines convert only a limited amount of heat into usable power. Much heat is lost through the exhaust system, and some is lost through the cooling system. Regaining some of the normally lost heat, and turning it into power, is the job given the turbocharger.

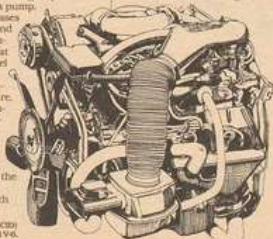
A turbocharger, quite simply, is a pump. Exhaust gases power it, and turn a compressor that forces a hard and air charge, under pressure, into the engine's combustion chambers. When this pressure is applied, the engine responds with

more horsepower. The effect is additive: as more exhaust pressure increases inlet pressure, the engine produces even more exhaust pressure to build up even more inlet pressure. So the effect is progressively lively, and smooth.

The turbocharger works on demand. While you're driving under normal conditions, the turbocharger loads. The V-6 engine operates with the normal air/fuel mixture reaching the cylinders. When the time comes for more power, such as when you need to pass, pressing the accelerator causes the turbo to speed up and the engine increases its power. Simply tilting your foot slows the turbocharger, and the engine returns to its normal mode.

Our turbocharger includes an electronic "Turbo Control Center." It works to control spark and helps provide good drivability. It compresses, automatically, for fuel octane, atmospheric conditions, load, altitude, and other driving conditions. The "Turbo Control Center" is the key to the system offered by Buick. Because, while turbocharging has existed for years, it wasn't until recently that electronic technology could develop a control center that would regulate performance adequately for passenger cars.

Turbocharging gives you an exciting powerplant to drive. It feels like a normal V-6, until called upon. Then, on demand, it will provide additional power during boost conditions. If ever there were an innovation that captured the spirit of both worlds, turbocharging is it.



3.8 liter (231 CID) turbocharged V-6

**A look at available equipment.**

**SOME 1980 BUICK AVAILABLE EQUIPMENT.**

One of the joys of buying a Buick is the fact it's available with a broad selection of options. Because of this we thought it would be a good idea to list some of the items you might wish to order on your new Buick. "Extras" that allow you to tailor your car to your desires and needs. And while you browse, consider this important fact: A well-equipped car will not only add to your driving pleasure, but can prove a good investment at resale time.

	Alphabetic	Stock	Century	Regal	LeSabre	Electra	Riviera
<b>CHASSIS</b>							
Antirattle - sliding glass							
Shaver - Flip-open, Vista-Vent		A	A	A	A	A	A
Delco AM radio		B	B	A	A	A	A
Delco AM-FM radio		A	A	A	A	A	A
Delco AM-FM stereo radio		A	A	A	A	A	A
Delco ETR AM-FM stereo radio w/digital readout & clock		A	A	A	A	A	A
Delco AM-FM stereo Full feature radio		A	A	A	A	A	A
Delco 6 track tape player w/AM-FM stereo radio		A	A	A	A	A	A
Delco 6 track tape player & ETR AM-FM stereo signal seeking radio w/digital readout & clock		A	A	A	A	A	A
Delco 6 track tape player & AM-FM stereo Full feature radio		A	A	A	A	A	A
Delco cassette tape player & AM-FM stereo radio		A	A	A	A	A	A
Delco cassette tape player & ETR AM-FM stereo radio		A	A	A	A	A	A
Delco cassette tape player & AM-FM stereo Full feature radio		A	A	A	A	A	A
Delco CB & AM-FM stereo radio w/Triband power antenna		A	A	A	A	A	A
Delco CB & ETR AM-FM signal seeking radio w/digital clock & Triband power antenna		A	A	A	A	A	A
Delco CB, 6 track tape player & AM-FM stereo radio w/Triband power antenna		A	A	A	A	A	A
Delco CB, 6 track tape player & ETR AM-FM stereo signal seeking radio w/digital clock & Triband power antenna		A	A	A	A	A	A
Delco CB, cassette tape player & AM-FM stereo radio		A	A	A	A	A	A
Delco CB, cassette tape player w/ETR AM-FM stereo signal-seeking radio w/digital clock & Triband power antenna		A	A	A	A	A	A
Delco radio option		A	A	A	A	A	A
Concert Sound System		A	A	A	A	A	A
<b>APPEARANCE &amp; PROTECTION</b>							
Designers' Accent Paint treatment		A	A	A	A	A	A
Body side stripes		A	A	A	A	A	A
Custom wire wheel covers (w/hubcap)		A	A	A	A	A	A
Chrome-plated steel wheels (4)		A	A	A	A	A	A
Designers' wheel covers		A	A	A	A	A	A
Styled aluminum wheels (4)		A	A	A	A	A	A
Designers' sport wheels (4)		A	A	A	A	A	A
Turquoise wheels (4)		A	A	A	A	A	A
Electric fuel cap lock		A	A	A	A	A	A
Flameless, gray, brown or dark brown exterior paint		A	A	A	A	A	A
Acoustic insulation package		A	A	A	A	A	A
Front/rear bumper guards		A	A	A	A	A	A
Protective body side moldings		A	A	A	A	A	A
Door-edge guards		A	A	A	A	A	A
Theft detection system with starter interrupt		A	A	A	A	A	A
Long vinyl top		A	A	A	A	A	A
Lambert top (Coupes)		A	A	A	A	A	A

\* - Standard on Sport Models and 5 TYP.  
 \* - Standard with Diesel V-8 engine option.  
 \* - Standard on Century Limited Sedan.  
 \* - Standard on LeSabre Sport Coupe and Electra Estate Wagon.  
 \* - 5 TYP only. Available on Riviera.  
 \* - Driver's side only.  
 \* - Passenger side available.  
 \* - Left side standard - Park Avenue.  
 \* - Park Avenue Sedan only.  
 \* - Standard on Century Limited Sedan.  
 \* - Not available on Wagon.  
 \* - Rear guards standard.  
 \* - Not available on 5 TYP.  
 \* - Standard on Skyhawk Limited.



# 1980 Buick safety features.

## OCCUPANT PROTECTION

Seat belts with push-button buckles for all passenger positions

Two front combination seat and inertia reel shoulder belts for driver (with reminder light and audible warning) and right front passenger

Energy-absorbing steering column

Passenger-guard door locks

Safety door latches and stamped-steel hinges

Folding seatback latches

Energy-absorbing padded instrument panel and front seatback tops

Laminated windshield

Safety armrests

Glove box and console door latch impact security

Smooth contoured door and window regulator handles

Automatic locking rear outboard seat belt retractors

Pressure-lock radiator cap

## ANTI-THEFT

Anti-theft ignition key reminder buzzer

Anti-theft steering column lock

Anti-theft key system (one key for ignition only, other key for glove compartment, doors, trunk, and tailgate)

Visible vehicle identification number

## ACCIDENT AVOIDANCE

Side marker lights and reflectors

Parking lamps that illuminate with headlamps

Four-way hazard warning flasher

Backup lights

Lane change feature in direction signal control

Windshield defrosters, washer and dual-speed wipers

Wide-view inside mirror (vinyl-edged, shatter-resistant glass and deflecting support)

Outside rearview mirror

Dual master cylinder brake system with warning light

Starter safety switch

Dual-action safety hood latches (front-opening hoods)

Headlamp aiming access provision

Low-glare instrument panel top, inside windshield moldings, wiper arms and blades, and steering wheel metallic surfaces

Safety wheel rims

Uniform shift quadrant

No winged wheel nuts, discs, and caps

Front disc brakes with audible wear indicators

Self-adjusting brakes

Pressure-relief gas cap

## BUY OR LEASE A BUICK

Many Buick dealers offer you the opportunity to buy or lease a Buick. Ask about their leasing arrangement. It may be right for you.

## THE GM CONTINUOUS PROTECTION PLAN

It offers service protection in addition to that provided by GM's new vehicle limited warranty. Coverage is available only in U.S.A. and Canada for the 1980 model year. Ask your Buick dealer about it.



# BUICK

Ident. No. 80-BA-1-9-79  
1.5mm  
Printed in U.S.A.

## A WORD ABOUT ASSEMBLY, COMPONENTS AND OPTIONAL EQUIPMENT IN THESE BUICK PRODUCTS:

The Buicks described in this brochure are assembled at facilities of General Motors Corporation operated by Buick or GM Assembly Division. These vehicles incorporate thousands of different components produced by various divisions of General Motors and by various suppliers to General Motors. From time to time during the manufacturing process, it may be

necessary, in order to meet public demand for particular vehicles or equipment, or to meet federally mandated emissions, safety, and fuel economy requirements, or for other reasons, to produce Buick products with different components or differently sourced components than initially scheduled. All such components have been approved for use in Buick products and will provide the quality performance associated with the Buick name.

With respect to extra-cost optional

equipment, make certain you specify the type of equipment you desire on your vehicle when ordering it from your dealer. Some options may be unavailable when your car is built. Your dealer receives advice regarding current availability of options. You may ask the dealer for this information. GM also requests the dealer to advise you if an option you ordered is unavailable. We suggest you verify that your car includes the optional equipment you ordered or, if there are changes, that they are acceptable to you.



# Model/Engine Combinations Used in 1980 Buicks

Engine	Standard or Available Engine	49 States or California*	Transmission	Mileage Estimates	
				EPA Est. MPG	Est. Highway
<b>SKYHAWK, SKYHAWK 'S'</b>					
V-6—LD5—(A) 3.8 liter, 231 CID, 2-bbl. Carb.	Standard	49 States	M4 A	15 19	24 27
	Standard	California	M4 A	N.A. 19	N.A. 26
<b>SKYLARK, SKYLARK LIMITED, SKYLARK SPORT</b>					
L-4—LW9 (5) 2.5 liter, 151 CID, 2-bbl. Carb.	Standard	49 States	M4 A	24 22	38 34
	Standard	California	M4 A	24 22	35 33
V-6—LE2 (7) 2.8 liter, 173 CID, 2-bbl. Carb.	Available	49 States	M4 A	20 20	33 30
	Available	California	M4 A	N.A. 18	N.A. 26
<b>CENTURY COUPES AND SEDANS</b>					
V-6—LD5 (A) 3.8 liter, 231 CID, 2-bbl. Carb.	Standard	49 States	M3 A	N.A. 20	N.A. 27
	Standard	California	A	19	26
V-6—LC8 (3) 3.8 liter, 231 CID, 4-bbl. Carb. Turbocharged	Available	49 States	A	18	25
	Available	California	A	18	25
V-8—LS5 (S) 4.3 liter, 265 CID, 2-bbl. Carb.	Available	49 States	A	17	26
V-8—L37 (W) 4.9 liter, 301 CID, 4-bbl. Carb.	Available	49 States	A	17	25
V-8—LG4 (H) 5.0 liter, 305 CID, 4-bbl. Carb.	Available	California	A	15	21
<b>REGAL COUPE, REGAL LIMITED COUPE</b>					
V-6—LD5 (A) 3.8 liter, 231 CID, 2-bbl. Carb.	Standard	49 States	A	20	27
	Standard	California	A	19	26
V-8—LS5 (S) 4.3 liter, 265 CID, 2-bbl. Carb.	Available	49 States	A	17	26
V-8—L37 (W) 4.9 liter, 301 CID, 4-bbl. Carb.	Available	49 States	A	17	25
V-8—LG4 (H) 5.0 liter, 305 CID, 4-bbl. Carb.	Available	California	A	15	21
<b>REGAL SPORT COUPE</b>					
V-6—LC8 (3) 3.8 liter, 231 CID, 4-bbl. Carb. Turbocharged	Standard	49 States	A	18	25
	Standard	California	A	18	25
<b>LE SABRE, LE SABRE LIMITED</b>					
V-6—LD5 (A) 3.8 liter, 231 CID, 2-bbl. Carb.	Standard	49 States	A	18	24
	Standard	California	A	19	27
V-6—LC4 (4) 4.1 liter, 252 CID, 4-bbl. Carb.	Available	49 States	A	17	23
V-8—L37 (W) 4.9 liter, 301 CID, 4-bbl. Carb.	Available	49 States	A	16	24
V-8—L77 (X) 5.7 liter, 350 CID, 4-bbl. Carb.	Available	49 States	A	15	23
V-8—L34 (R) 5.7 liter, 350 CID, 4-bbl. Carb.	Available	California	A	15	22
<b>LE SABRE SPORT COUPE</b>					
V-6—LC8 (3) 3.8 liter, 231 CID, 4-bbl. Carb. Turbocharged	Standard	49 States	A	16	23
	Standard	California	A	16	22

OVER



Engine	Standard or Available Engine	49 States or California*	Transmission	Mileage Estimates	
				EPA Est. MPG	Est. Highway
<b>ELECTRA LIMITED, ELECTRA PARK AVENUE</b>					
V-6—LC4 (4)					
4.1 liter, 252 CID, 4-bbl. Carb.	Standard	49 States	A	17	23
V-8—LF9 (N)					
5.7 liter, 350 CID, Diesel	Available N.A. California at time of printing	49 States	A A	21 N.A.	31 N.A.
V-8—L77 (X)					
5.7 liter, 350 CID, 4-bbl. Carb.	Available	49 States	A	15	22
V-8—L34 (R)					
5.7 liter, 350 CID, 4-bbl. Carb.	Available	California	A	15	21
<b>RIVIERA</b>					
V-8—L34 (R)					
5.7 liter, 350 CID, 4-bbl. Carb.	Standard Standard	49 States California	A A	15 15	22 22
V-6—LC8 (3)					
3.8 liter, 231 CID, 4-bbl. Carb. Turbocharged	Available Available	49 States California	A A	16 16	23 24
<b>RIVIERA S TYPE</b>					
V-6—LC8 (3)					
3.8 liter, 231 CID, 4-bbl. Carb. Turbocharged	Standard Standard	49 States California	A A	16 16	23 24
V-8—L34 (R)					
5.7 liter, 350 CID, 4-bbl. Carb.	Available Available	49 States California	A A	15 15	22 22
<b>CENTURY STATION WAGONS</b>					
V-6—LD5 (A)					
3.8 liter, 231 CID, 2-bbl. Carb.	Standard Standard	49 States California	A A	20 19	27 26
V-8—LS5 (S)					
4.3 liter, 265 CID, 2-bbl. Carb.	Available	49 States	A	16	23
V-8—L37 (W)					
4.9 liter, 301 CID, 4-bbl. Carb.	Available	49 States	A	16	24
V-8—LG4 (H)					
5.0 liter, 305 CID, 4-bbl. Carb.	Available	California	A	14	19
<b>LE SABRE AND ELECTRA ESTATE WAGONS</b>					
V-8—L37 (W)					
4.9 liter, 301 CID, 4-bbl. Carb.	Standard	49 States	A	15	21
V-8—LF9 (N)					
5.7 liter, 350 CID, Diesel	Available N.A. California at time of printing	49 States	A A	21 N.A.	31 N.A.
V-8—L77 (X)					
5.7 liter, 350 CID, 4-bbl. Carb.	Available	49 States	A	15	22
V-8—L34 (R)					
5.7 liter, 350 CID, 4-bbl. Carb.	Available	California	A	15	20

Remember: Compare these MPG estimates inside the boxes to the estimated MPG of other cars. You may get different mileage, depending on your driving speed, trip length and weather conditions. Your actual highway mileage will probably be less than estimated highway fuel economy.

\*California Assembly Line emission equipment, C-4 System (except on diesel) and testing required in California.

( ) Denotes VIN (Vehicle Identification Number) Engine Code. Identified as the fifth entry (letter or number) from the left on the vehicle serial number plate. The vehicle serial number plate is located on the top portion of the driver's side of the instrument panel and can be viewed from the exterior by looking through the windshield.

- (3) (4) (A) (X) produced by GM-Buick Division
- (7) Produced by GM-Chevrolet Division
- (H) Produced for GM-Chevrolet Division and GM of Canada
- (N) (R) produced GM-Oldsmobile Division
- (5) (W) (S) Produced by GM-Pontiac Division
- M3—Manual 3-speed Transmission
- M4—Manual 4-speed Transmission
- A—Automatic Transmission
- N.A.—Not Available at time of printing

A word about engines . . . The Buicks listed here are equipped with GM-built engines produced by various divisions. See your dealer for details.