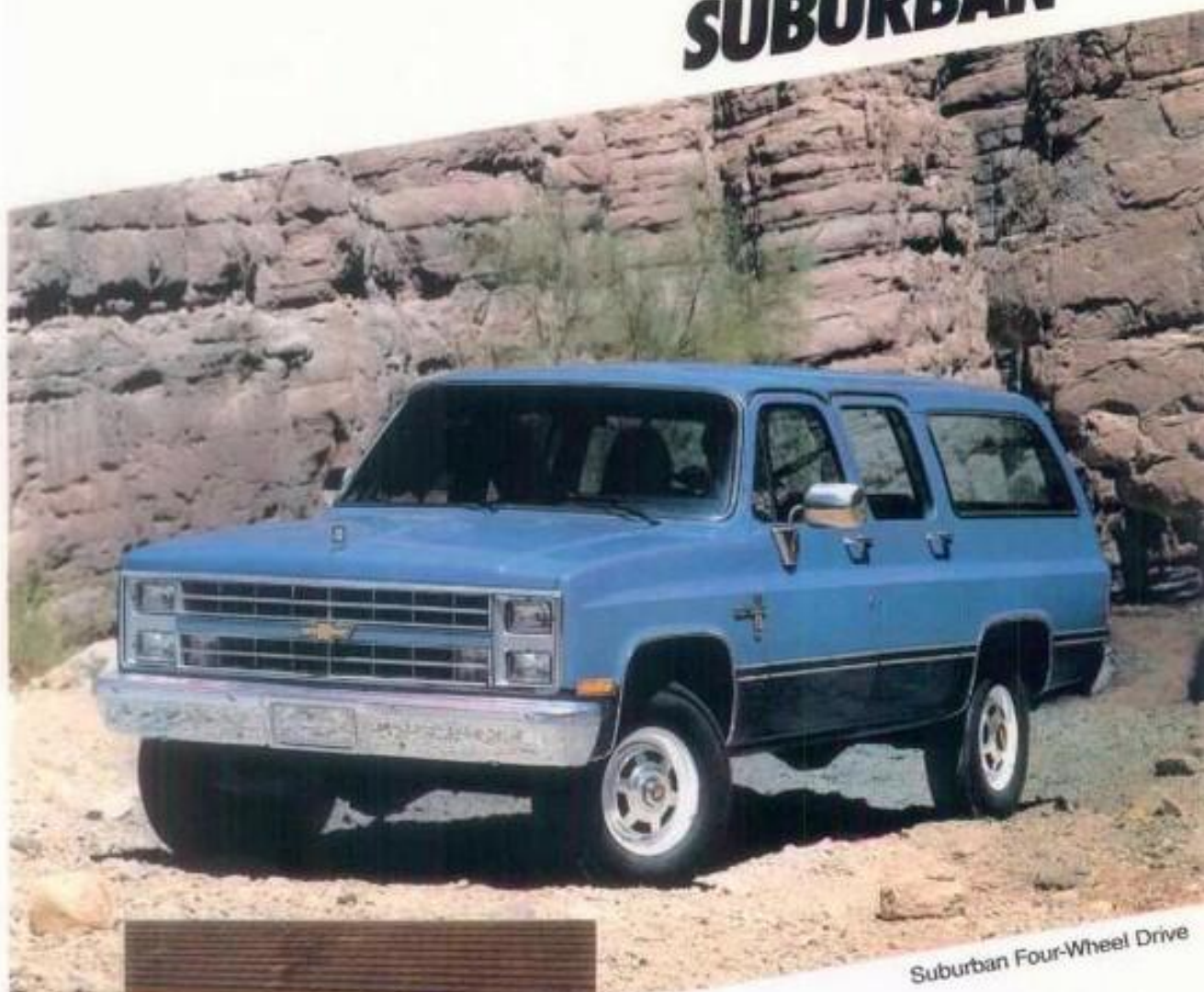


SUBURBAN



Suburban Four-Wheel Drive



Suburban Two-Wheel Drive

1 9 8 6 C H E V Y T R U C K S

SUBURBAN FOR '86



EXTERIOR

- Three new exterior colors are available, including Canyon Copper Metallic, Nevada Gold Metallic and Steel Gray Metallic.
- Optional reclining bucket seats for driver and passenger now include outboard armrests.

BODY

- Seat-back angle and carefully designed bench seat cushion result in comfortable seating positions.
- Wet-arm windshield wiper/washer system provides for good spray of the fluid and cleaning of the windshield.
- Large fuse block provides good serviceability.
- Doorjamb switches, included with available Scottsdale and Silverado trim on rear side doors, rear panel doors, and tailgate, activates interior and dome lamps for ease in nighttime loading and unloading of passengers and cargo.

CHASSIS AND POWER TEAM

- Horsepower for the 6.2 Liter Diesel engine with H.D. emissions is 148 net HP.

- All-season-tread-design tires are now standard on all models with 15" wheels. (Note: Does not apply to C/K20 Series.) These steel-belted radial tires are designed for foul weather traction, low noise level and long tread life.

- Manual locking hubs are standard on K models for 1986, with RPO X6Z automatic hubs available on K10 and K20 models.

- The 6.2 Liter Diesel engine (RPO LH6) with California emissions is not available for 1986.

- An electronic booster fan on all C/K models with the 7.4 Liter engine and air conditioning to provide optimum engine cooling.

- All gas engines use a new 5-ribbed poly-vee generator accessory belt drive for greater flexibility, durability and contact area.

OPTIONS

- Deluxe Front Appearance option (RPO V22) standard on Silverado. Highlights include dual rectangular headlamps and grille with body-color paintfill treatment.

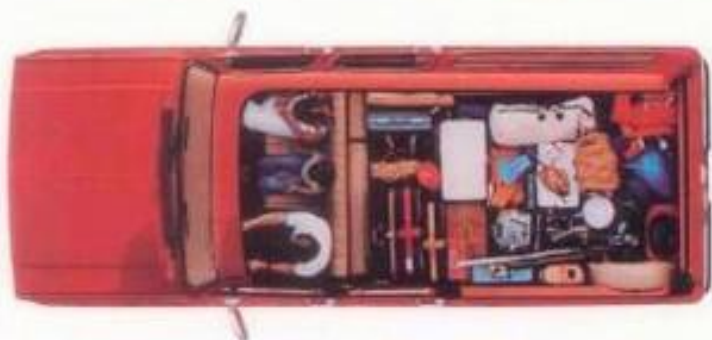


- Custom Vinyl and Custom Cloth seat fabric available for upper trim levels.
- All optional 15" highway-tread steel-belted radial tires will feature all-season tread.
- Front tow hooks available on all models.
- Cast aluminum wheels for improved appearance. Includes four 15" x 7" cast aluminum wheels and center hub covers (RPO N90).
- Power door locks available for panel rear doors.

STANDARD VALUE FEATURES

ALL THIS AT NO EXTRA COST:

- Front stabilizer bar for better roadability standard on C20, all 4-wheel-drive and diesel models.
- High Energy Ignition system for quick starts, reduced maintenance.
- Fade-resistant front disc brakes with audible lining wear sensors.
- Power steering.
- More room than regular station wagons offer. Seats up to nine with available seating.
- Able to carry bigger loads (cargo and people) because under it all is a tough truck chassis.
- Over 60% more load space than the largest full-size station wagon. Approximately 167 cubic feet of inside luggage space when second seat is folded down and available third seat is not installed.
- Contemporary styling makes Suburban a versatile passenger/cargo carrying vehicle. An ideal travel wagon that's excellent for trailer towing.
- Suburban does most anything a station wagon can, and many things a station wagon can't.
- All-season-tread-design steel-belted radial tires for superb traction, long tread life.
- Self-adjusting hydraulic clutch control for smooth operation with manual transmission.



- Bright metal roof drip moldings direct water away from door openings.
- Chrome front and rear bumpers.
- Bright metal hubcaps.
- Full-depth foam front bench seat in vinyl.
- Tinted glass in all windows, standard, deep-tinted glass available.
- Four side doors for easy accessibility to passenger and cargo area.
- Two rear panel doors standard.
- Wagon-type tailgate available with manually retractable window glass.
- Large fuse block for good serviceability.
- Wet-arm windshield wiper/washer system provides precise fluid spray and efficient coverage.
- Anti-chip coating along lower sides.
- Impressive anti-corrosion protection.
- Electric tailgate window available.
- Reclining bucket seats with center console available.

CHASSIS VALUE FEATURES



TOUGH TRUCK FRAME AND SUSPENSION

- Rugged girder beam independent front suspension, with coil springs on 2-wheel-drive models, provides a smooth ride.
- Two-stage, multileaf rear springs automatically adjust for heavier loads.
- Rubber-bushed spring eye shackles to reduce noise and ride harshness.

4-WHEEL-DRIVE MODELS

- Includes two-speed transfer case, leaf-type front suspension and front stabilizer bar with hypoid front driving axle.

FRONT DISC BRAKES STANDARD

- Durable and self-adjusting.
- Resist fade, recover quickly from water immersion.
- Shielded for dust protection.
- Lining wear sensors on front disc brakes audibly signal when pads should be replaced.
- Semi-metallic lining material.

FINNED REAR BRAKE DRUMS

- For efficient cooling.
- Outer edges formed to help exclude contaminants.

STAGGERED REAR SHOCKS

- Positioned with one slanting forward, the other aft.
- Reduces brake and power hop.

SALISBURY REAR AXLE

- Tapered roller bearings.
- Broad ratio coverage.
- Semi-floating design for most models.
- 6,000-lb. capacity on Series 20 models.

GVW RATINGS

- 6,100 to 8,600 lbs.

TOWING

- Tows up to 9,500 lbs. when properly equipped. Various optional equipment available including fuel tank with up to 40-gallon capacity.

ANTI-CORROSION MEASURES IN CRITICAL AREAS

- Galvanized metal used on the floor panels, side door inner panels, hood inner panel, side door frames, front fender inner panels and spare tire well.
- Zincrometal[®] used on outer hood panel, outer front fenders and door panels, rear quarter panels and rear doors.

- Protective coatings are used for inner surfaces of door inner rocker panels, front part of hood panels, front fender panels and outer front surfaces of radiator support.

- Precoated steel (with primer baked on one side) used for outer panels and door frames, side outer panels, floor panel front cross sills, windshield frame and cowl panel assembly. Galvanized steel used for side door inner panels and venti-panels, radiator grille lower filler panel and jack stowage retainer. Radiator support lower reinforcement and radiator grille upper panel are made of zinc-iron alloy steel.

- Use of Zincroterme[®] coating on brake pipes.

- Anti-chip coating on lower body side surfaces.

- Zincroterme coating on power steering hydraulic pressure lines.

- Body and sheet metal are primed, with the Suburban steel body, doors and tailgate totally immersed in electrically charged primer, drawing paint into hidden seams and crevices for added corrosion protection.

- After the finish paint is applied and baked on, aluminum wax preservative is sprayed inside the cowl chamber, the door rocker panels and the lower portion of the doors and fenders.

BODY VALUE FEATURES

SEATS UP TO NINE FACING FORWARD

- Full-width front seat standard.
- Folding second seat available.
- Third seat is available with second seat and includes quick-release feature for easy removal.

SPLIT DESIGN OF SECOND SEAT

lets either section fold independently for access to available third seat, or to handle long loads.

WITH BOTH SECTIONS FOLDED DOWN,

Suburban presents a large, flat, unobstructed load area that's over 8 feet long.

SUBURBAN'S LOAD SPACE

between back of third seat and tailgate is 40 cubic feet.

- With available third seat removed, there's 104 cubic feet of load space.

- With second seat folded down and third seat removed, Suburban has 167 cubic feet of carrying capacity.

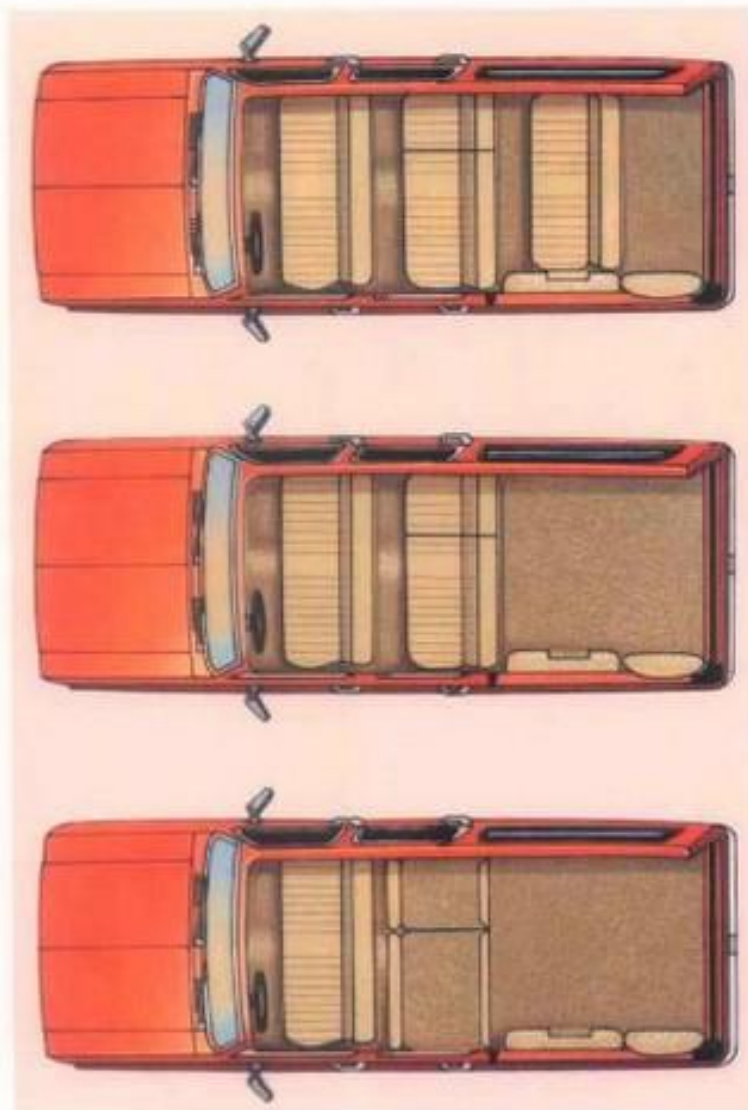
EVEN WITH AVAILABLE THIRD SEAT IN PLACE, Suburban has plenty of space left for cargo.

CARGO BARRIER IS PROVIDED

by Suburban's second seat in the folded position; it helps protect the lower front seat-back from impact damage.

FRONT BUCKET SEATS

- Reclining front bucket seats with outboard armrest and center console available. (See illustration on page 6A.)



SCOTTSDALE/SILVERADO TRIM OPTIONS



Silverado trim

The Scottsdale option is available in vinyl bench seat, Custom Vinyl bench seat and Custom Cloth bench seat. Colors: Blue and Saddle Tan. The Silverado option is available in Custom Vinyl bench seat (Blue, Burgundy, Saddle Tan), Custom Cloth bench seat (Blue, Burgundy, Saddle Tan, Slate Gray), Custom Vinyl reclining bucket (Blue, Saddle Tan) and Custom Cloth reclining bucket (Blue, Saddle Tan, Slate Gray). See pages D and E for complete details on other trim features of the Scottsdale and Silverado options.



Scottsdale trim